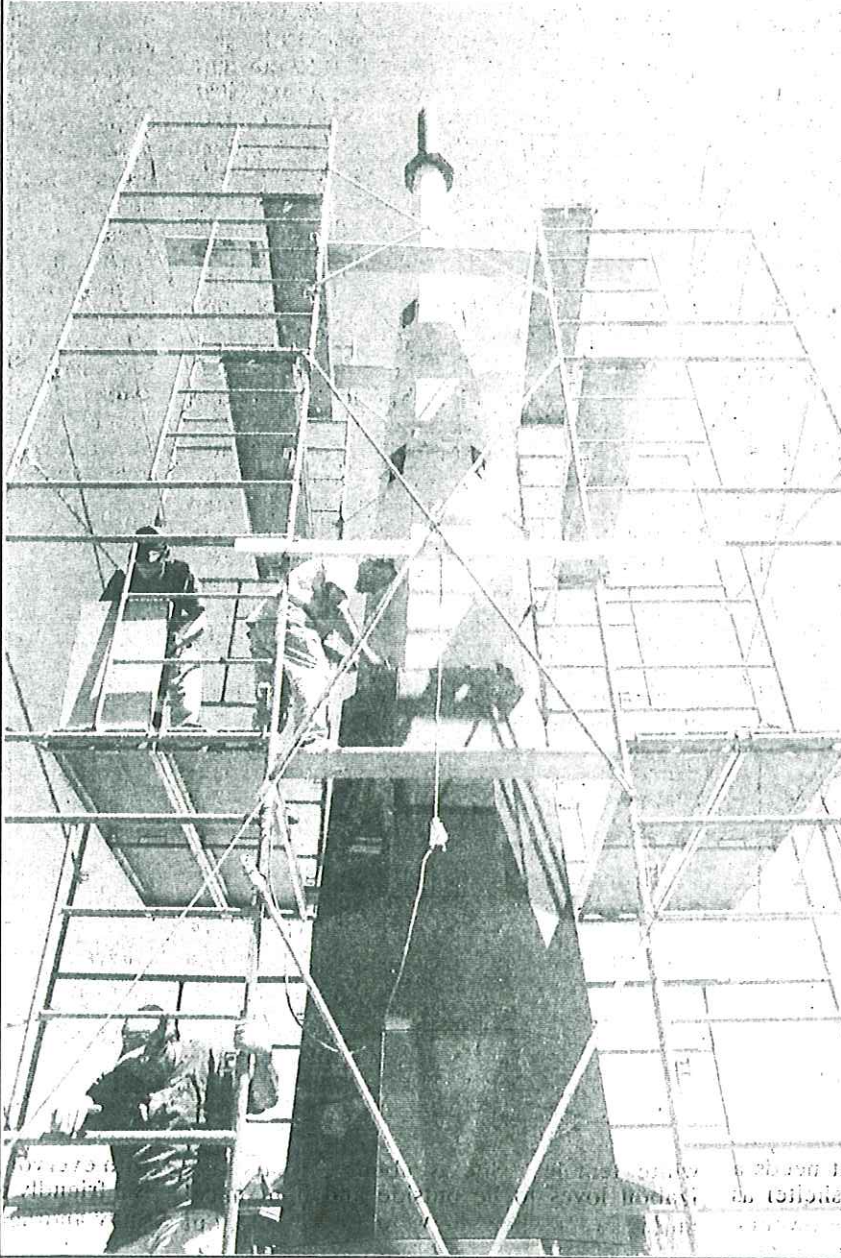


Loving the Sun at Newpark



Clockwise from top, Clint McClesky, Jeff Wirtz and Zach Hendricks of Terra Bella, Inc add marble to the two-tone, 40-foot, octagonal granite obelisk at Newpark Sun Calendar Plaza.

According to a press release, the sundial was created by a team of design professionals led by Jim Doilney, co-owner of Newpark. Doilney has had a life-long fascination with energy and solar design.

The sun will cast a shadow upon the plaza from 10 a.m. to 4 p.m. Marks and lines will track the sun allowing visitors to follow the path of the sun.

The obelisk is stationed at the entrance of the 1,200 acre Swaner Nature Preserve. It lies adjacent to a 15,000 square-foot community amphitheater where live music, weddings and special events can be held.

The plaza will also feature public art displays, fire pits, a jumbo-tron and outdoor seating for small gatherings.

DAVID RYDER/PARK RECORD